

Property Information

All facilities have a \$50 refundable security deposit with the exception of the Nature Center at Camp Del O'Claire and Red Arrow Lodge at Camp Sacajawea (\$100).

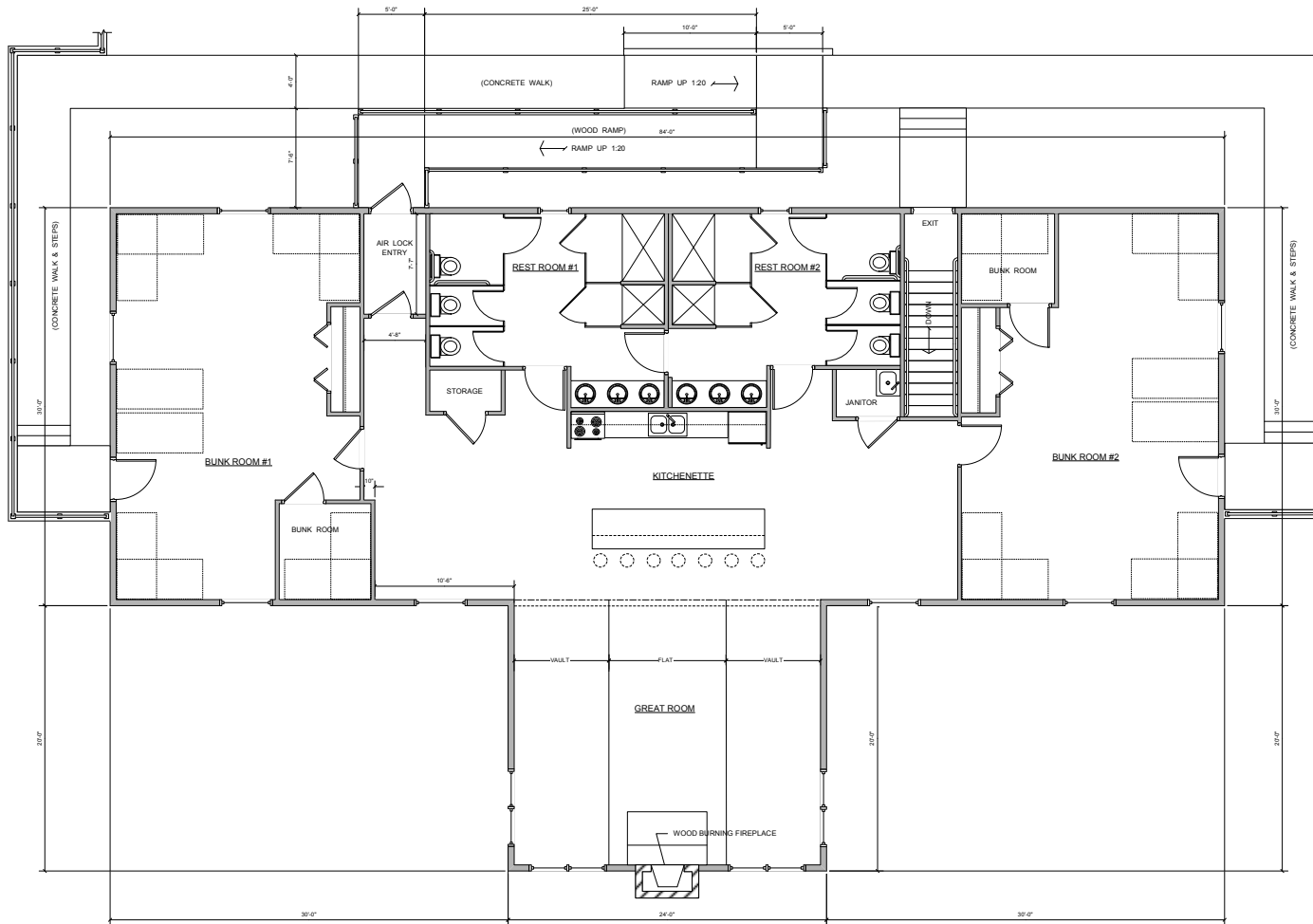
- Day use is defined as up to eight (8) hours of use within one day.
- Overnights are from 3:30 p.m. on the first day to 2 p.m. the next day.
- Non-profit organizations/schools/government agencies are allowed to use our facilities. The security deposit and rental fee will be two times the amount listed.
- For profit organizations are also allowed to rent our facilities at four times the amount listed along with the \$100 security deposit
- All camps (except Camp Winnecomac) will be closed during the nine (9) day (15 day in Michigan) deer hunting season.

Camp Birch Trails

Rock Falls, WI

Located in the town of Rock Falls, approximately eight miles north of Merrill, WI, this is our largest camp! The camp surrounds Lake Olivotti (a man-made lake), which highlights many summer programs. The camp has two lodges, platform tents, cabins, yurts, large dining hall, a swimming area on the lake with a sandy beachfront and large dock, and a sledding hill for winter fun. Tents, boats, canoes, and kayaks are also available for use at the camp. During the winter months, groomed cross-country ski trails and a limited number of snowshoes are available for use.

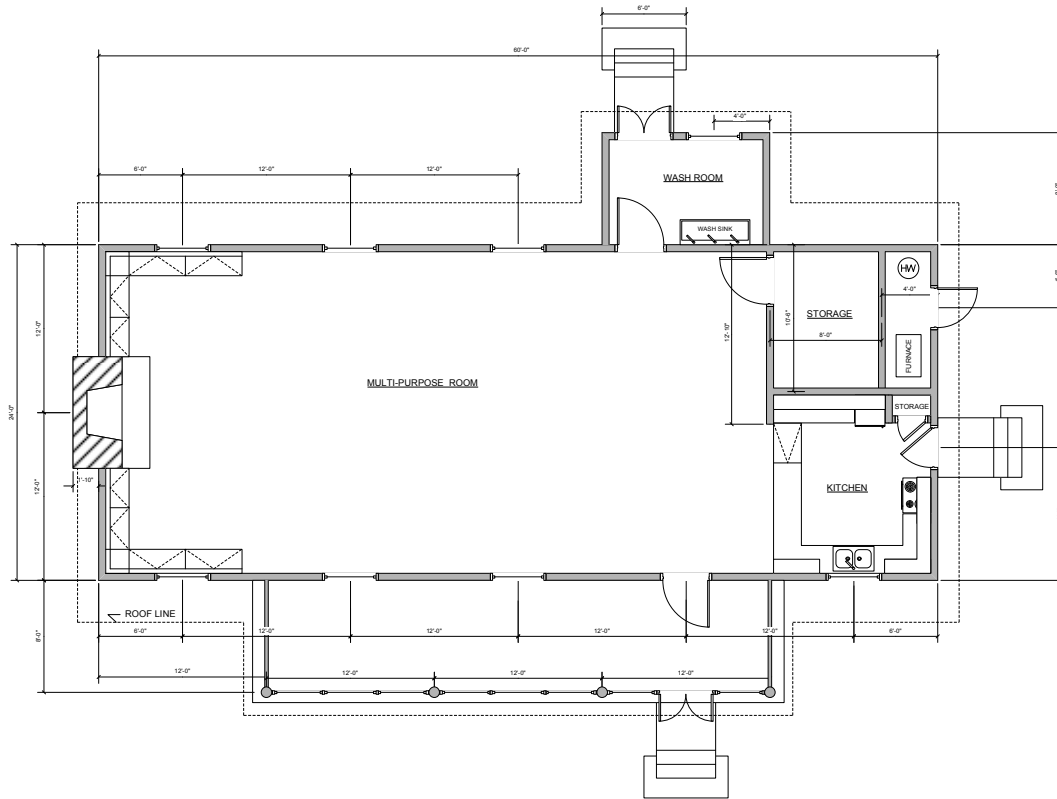
Graebel Lodge Capacity: Fee: Available:	24/overnight \$45/day; \$60/overnight September - May	Jessica Lynn Graebel Memorial Lodge is a heated lodge with a fully equipped kitchen. There is a program room with tables and chairs, two separate bunkrooms, two separate washrooms with showers, a wood-burning fireplace, walk-out basement, washer and dryer in the basement and a large fire circle (with seating) at the site for outdoor cooking. See floor plan on page 2.
Maple Ridge Lodge Capacity: Fee: Available:	40/day; 20/overnight \$15/day use only April, May, September, October	This lodge features a kitchen with a refrigerator, stove and running hot water, large program room with tables and chairs, wood-burning fireplaces and outdoor latrines. See floor plan on page 3.
Cabin Unit Capacity: Fee: Available:	40 \$18/day; \$30/overnight September - May	Cabin names: "Hatchet Haven", "Nancy", "Frawley", "Pep", and "Hagge"; electricity in each cabin, a fire circle (with seating) and outdoor latrines.
Leafy Glen and Maple Ridge Platform Tents Capacity: Fee: Available:	24 \$18/day; \$30/overnight April, May, September, October	Both units have six (four-person) platform tents with cots, a hand-wash station with running water, fire circles (with seating) and outdoor latrines.
Ethel's Yurt Village Capacity: Fee: Available:	42 \$18/day; \$30/overnight September - May	Ethel's Yurt Village has five yurts that all have heat and electricity. There is a fire circle (with seating), access to water, and an outdoor latrine.
Dining Hall Capacity: Fee: Available:	100 - 125 \$30/day use only September - May	Large dining facility with a fully-equipped commercial kitchen. Used for larger events, there is also a bathroom, fireplace, and attached deck. Two additional latrines are nearby.



Graebel Lodge

Floor Plan

Scale 1/4" = 1FT.



Maple Ridge Lodge

Floor Plan

Scale 1/4" = 1FT.