

Property Information

All facilities have a \$50 refundable security deposit with the exception of the Nature Center at Camp Del O’Claire and Red Arrow Lodge at Camp Sacajawea (\$100).

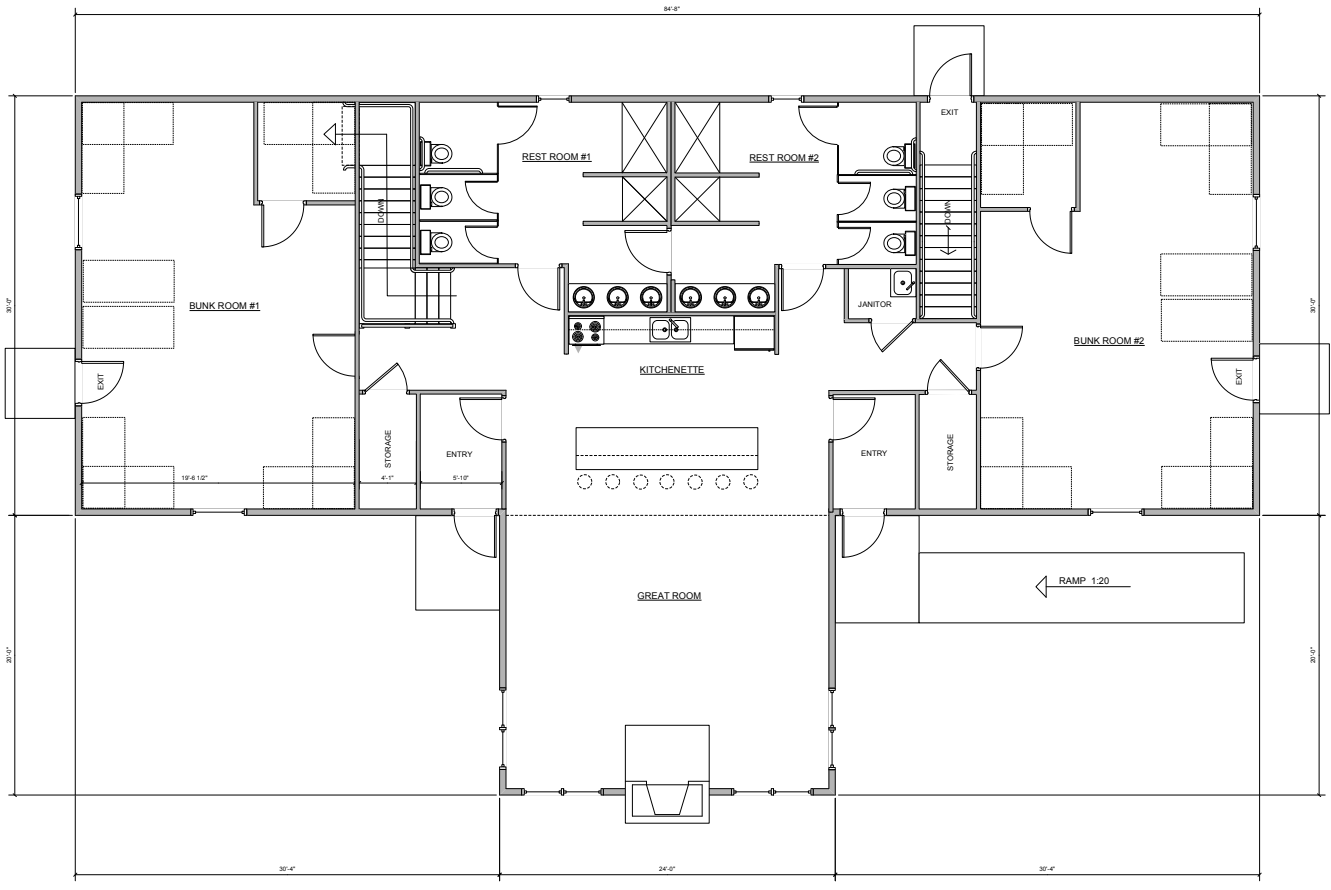
- Day use is defined as up to eight (8) hours of use within one day.
- Overnights are from 3:30 p.m. on the first day to 2 p.m. the next day.
- Non-profit organizations/schools/government agencies are allowed to use our facilities. The security deposit and rental fee will be two times the amount listed.
- For profit organizations are also allowed to rent our facilities at four times the amount listed along with the \$100 security deposit
- All camps (except Camp Winnecomac) will be closed during the nine (9) day (15 day in Michigan) deer hunting season.

Camp Del O’Claire

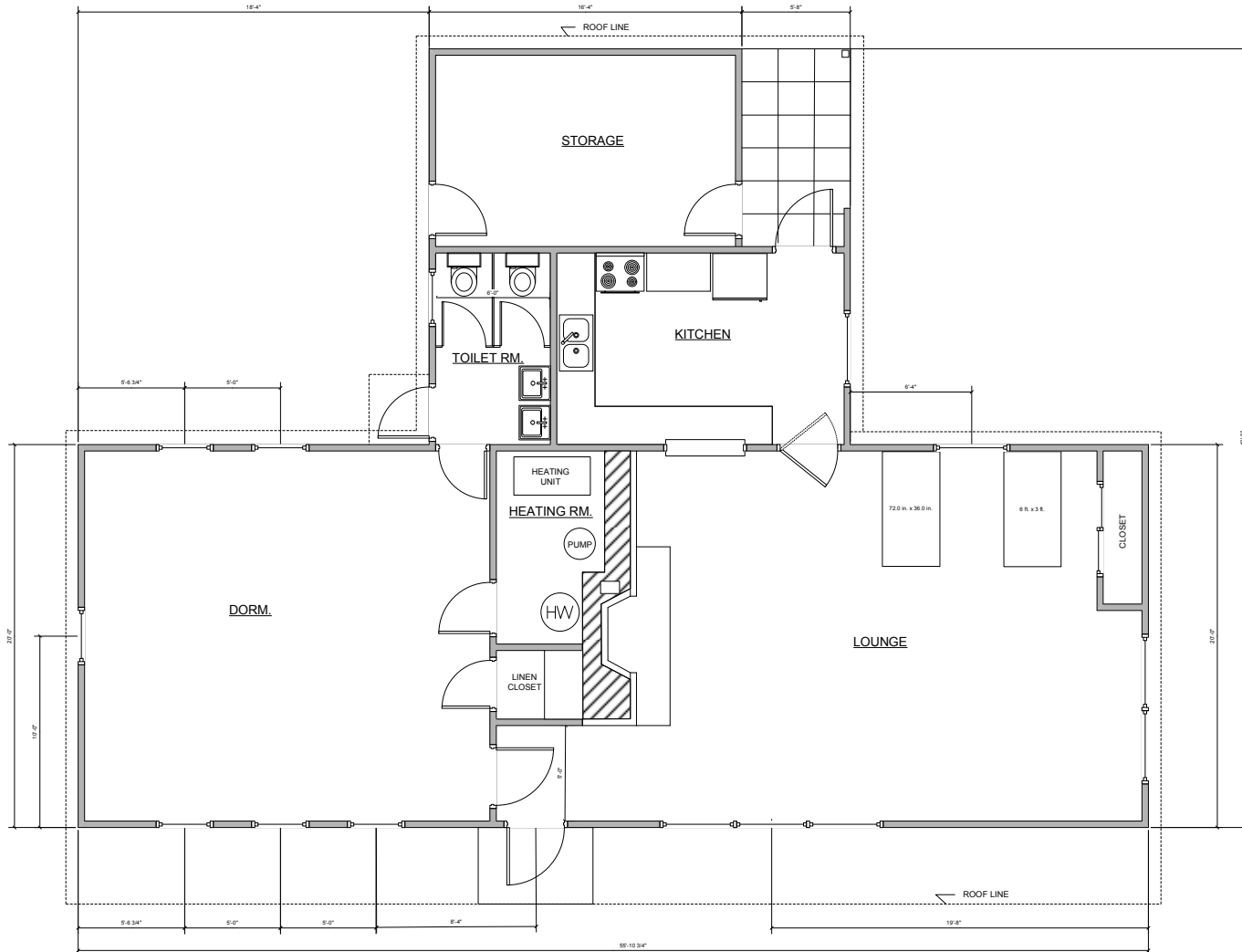
Weston, WI

Located in the Village of Weston, WI, and bordered on the south by the main tributary of the Eau Claire River, there are plenty of woods to explore here. The camp is located next to the Yellow Banks County Park, which has a large field and playground equipment. One lodge is available for overnights while there is another lodge available for day use. A nature center also adorns this property along with some camp sites. Tents are also available for use. During the winter months, a limited number of snowshoes are available for use.

Alexander Lodge Capacity: Fee: Available:	24 \$45/day \$60/overnight Year round	This heated lodge features two bunk rooms and a fully-equipped commercial kitchen. There is a program room with tables and chairs, two separate washrooms with showers, fireplace, and a washer and dryer in the basement. Outside there is a large fire circle (with seating) for outdoor cooking and a sledding hill. See floor plan on page 2.
Heinzen Memorial Lodge (a.k.a. the Arts and Crafts Lodge) Capacity: Fee: Available:	24 \$15/day use only April - October	The Heinzen Memorial Lodge features bathrooms, refrigerator, stove, fireplace, a program/arts and crafts room, tables, chairs and several fire circles (with seating) for outdoor cooking. See floor plan on page 3.
Nature Center Capacity: Fee: Deposit: Available:	24 \$20 \$100 Year round	The Nature Center is directly adjacent to the Alexander Lodge. It features items such as animal furs, animal skulls, turtle shells, various nature books and pictures, large-screened microscopes, telescopes and other displays relating to the world around us. Program curriculum provided. This facility is NOT available to non-member groups or organizations.
Arrowhead Capacity: Fee: Available:	10 (4-person) tents \$15/overnight May - October	Very primitive campsite in a cleared wooded area with a fire circle (with seating). There is no latrine or running water at this site.
Wilderness Capacity: Fee: Available:	10 (4-person) tents \$15/overnight May - October	Very primitive campsite in a cleared wooded area with a fire circle (with seating). There is no latrine or running water at these sites.



Alexander Lodge
Floor Plan
 Scale 1/4" = 1FT.



Heinzen Lodge

Scale 3/8" = 1 FT.
Floor Plan