

Property Information

All facilities have a \$50 refundable security deposit with the exception of the Nature Center at Camp Del O'Claire and Red Arrow Lodge at Camp Sacajawea (\$100).

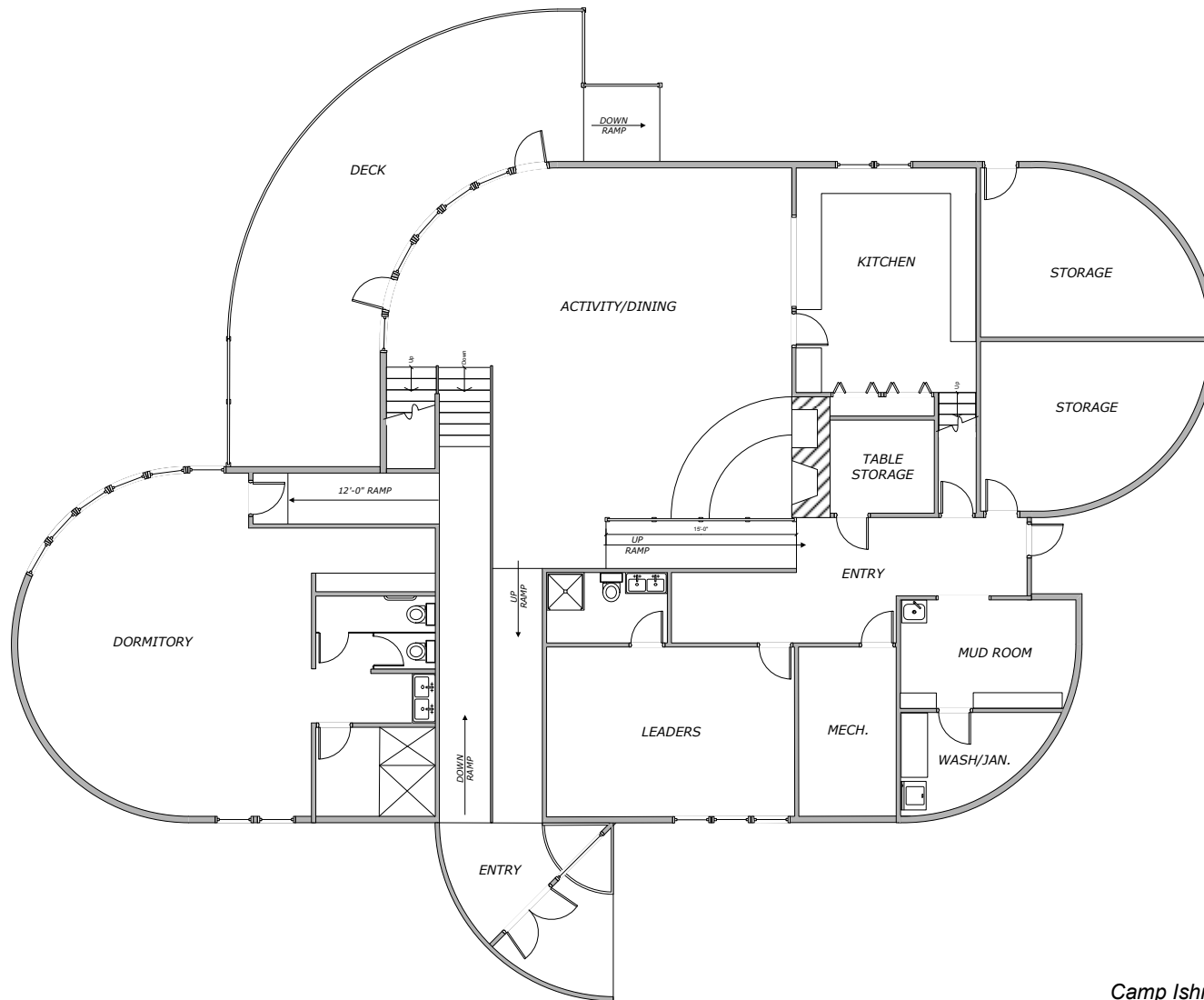
- Day use is defined as up to eight (8) hours of use within one day.
- Overnights are from 3:30 p.m. on the first day to 2 p.m. the next day.
- Non-profit organizations/schools/government agencies are allowed to use our facilities. The security deposit and rental fee will be two times the amount listed.
- For profit organizations are also allowed to rent our facilities at four times the amount listed along with the \$100 security deposit
- All camps (except Camp Winnecomac) will be closed during the nine (9) day (15 day in Michigan) deer hunting season.

Camp Ishnala

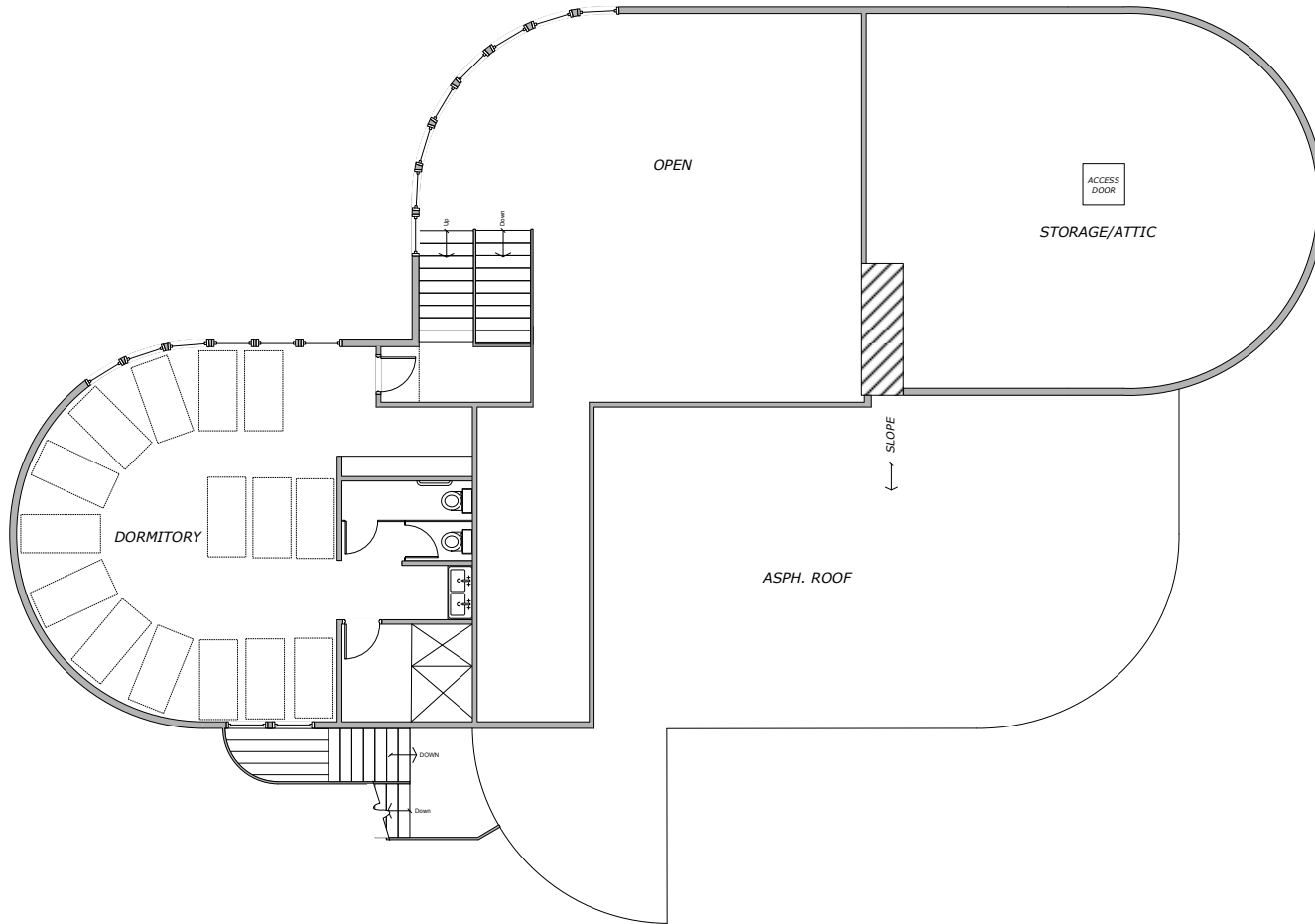
Pound, WI

55 miles north of Green Bay, plenty of woodlands, an open field, hiking trails, and Memory Lake. The camp features a troop house, tent cabin units, and some tent sites. It also features a large shelter and an amphitheater. During the summer, keep yourself busy by hiking, canoeing and boating. In the winter, strap on those cross country skis available at camp and explore this camp!

Troop House Capacity: Fee: Available:	40 \$45/day \$60/overnight Year round	Electricity, heat, indoor plumbing, bathrooms/showers, fireplace, phone, fully equipped kitchen. There is a leader's room with five beds, two dormitory-style rooms with sleeping mats for 20 in each room. Handicapped accessible. See floor plans on pages 2-3.
Tent Cabins (3 units: Chipmunk, Pathways, Sleeping Fawn) Capacity: Fee: Available:	36 \$18/day \$30/overnight May - October	Each unit has six tent cabins. Includes one large open shelter with outdoor cooking equipment, outdoor latrines, and a hand pump for water.
Tent Sites (6) Capacity: Fee: Available:	4 tents/site \$15/overnight May - October	Sites for tents all have fire circles, picnic table, one open shelter with fireplace, water pump, and outdoor latrine.
Day Use with Shalaka Shelter Capacity: Fee: Available:	25 \$18/day use only May - October	Open shelter has a fireplace and electricity. Option to have a screened shelter with just a fireplace instead.



Camp Ishnala
Troop House
 1st Floor Plan
 Scale 1/8" = 1'0"



Camp Ishnala
Troop House
2nd Floor Plan
Scale 1/8" = 1'0"