

Property Information

All facilities have a \$50 refundable security deposit with the exception of the Nature Center at Camp Del O'Claire and Red Arrow Lodge at Camp Sacajawea (\$100).

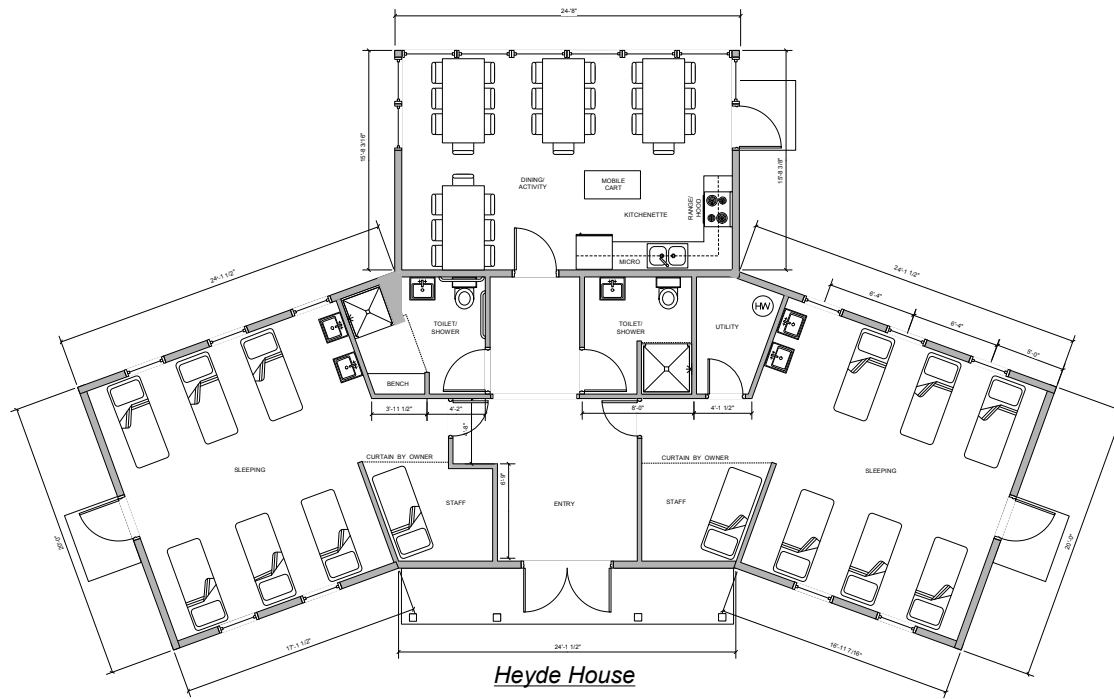
- Day use is defined as up to eight (8) hours of use within one day.
- Overnights are from 3:30 p.m. on the first day to 2 p.m. the next day.
- Non-profit organizations/schools/government agencies are allowed to use our facilities. The security deposit and rental fee will be two times the amount listed.
- For profit organizations are also allowed to rent our facilities at four times the amount listed along with the \$100 security deposit
- All camps (except Camp Winnecomac) will be closed during the nine (9) day (15 day in Michigan) deer hunting season.

Camp Nawakwa

Cornell, WI

Located northwest of Cornell, WI, this property contains three lodges, a dining hall with a lower level multi-purpose room, yurts, platform tents, tent cabins, and an amphitheater. There are hiking trails, large play field, waterfront area on Picnic Lake, ponds and a glacial kame.

Chalet Capacity: Fee: Available:	22 \$45/day \$60/overnight September - May	Heated, men's/women's bathrooms and showers, fully equipped kitchen, tables, chairs, fireplace, TV, mattresses.
Heyde House Capacity: Fee: Available:	28 \$45/day \$60/overnight September - May	Two separate sleeping areas with bunk beds at this heated facility. Includes bathrooms and showers, fully equipped kitchen, tables, and chairs. See floor plan on page 2.
Mary E. Marshall Lodge Capacity: Fee: Available:	15 \$18/day April - October	Newly restored with electricity and a bathroom. Large open area best used for troop/group ceremonies. Tables and chairs available upon request.
Timbercrest Capacity: Fee: Available:	24 \$18/day \$30/overnight April, May, and September	Timbercrest houses three yurts in this unit. These yurts are not winterized; however, they do have washstands, latrines, four bunk beds in each yurt, a picnic table, and a fire circle.
Platform Tent Units (2) Capacity: Fee: Available:	16 or 36 \$18/day \$30/overnight May and September	Lakeview has four platform tents and Hilltop has nine platform tents with four cots per tent, washstands, latrines, a picnic table, a fire circle, and a beautiful view of Picnic Lake.
Valley Capacity: Fee: Available:	20 \$18/day \$30/overnight April, May and September	There are 5 tent cabins in this unit. All of them are not winterized, 4 cots per tent cabin, washstands, latrines, a picnic table, and a fire circle.



Heyde House

Floor Plan

Scale 1/4" = 1 FT.