

Property Information

All facilities have a \$50 refundable security deposit with the exception of the Nature Center at Camp Del O'Claire and Red Arrow Lodge at Camp Sacajawea (\$100).

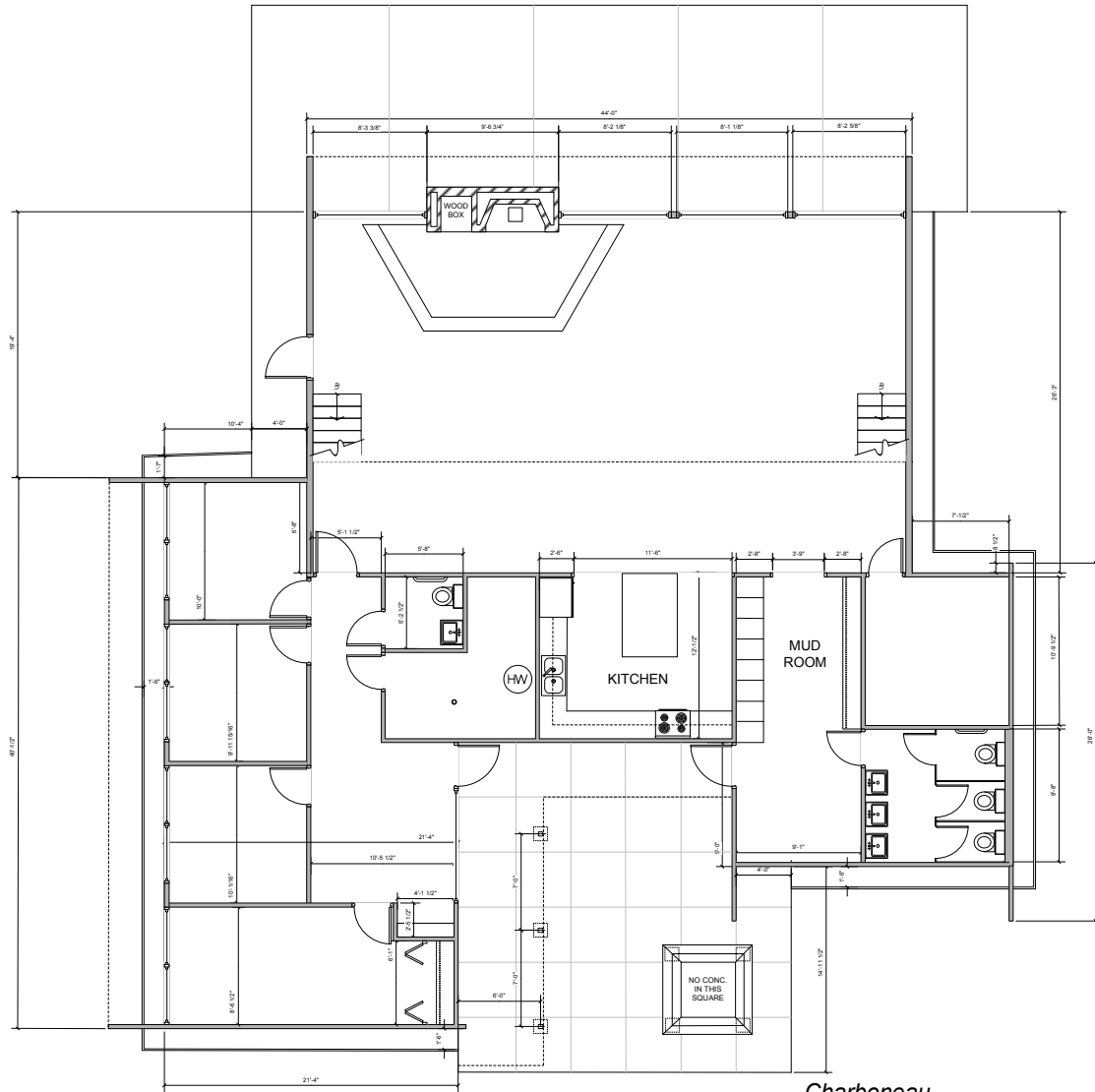
- Day use is defined as up to eight (8) hours of use within one day.
- Overnights are from 3:30 p.m. on the first day to 2 p.m. the next day.
- Non-profit organizations/schools/government agencies are allowed to use our facilities. The security deposit and rental fee will be two times the amount listed.
- For profit organizations are also allowed to rent our facilities at four times the amount listed along with the \$100 security deposit
- All camps (except Camp Winnecomac) will be closed during the nine (9) day (15 day in Michigan) deer hunting season.

Camp Sacajawea

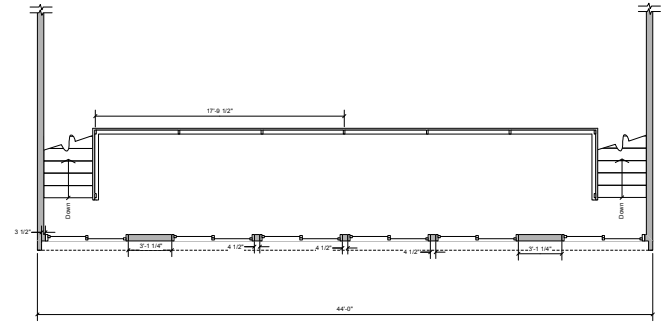
Wisconsin Rapids, WI

Lots of forest and Lake Tapawingo highlight this property. This camp includes three lodges, cabins, platform tents, and tent sites. There are plenty of forests and ponds to explore in at this camp located in Wisconsin Rapids. In the winter, there are cross country skis and snowshoes available for your use!

Baptiste Lodge Capacity: Fee: Available:	50-70/day; 30/overnight \$24/day; \$36/overnight September - May	Heated lodge with electricity. Fireplace, TV / VCR, fully equipped kitchen, tables, chairs, bathrooms, and phone.
Charbonneau Center Capacity: Fee: Available:	50/day; 30/overnight \$24/day; \$36/overnight September - May	Heated lodge with electricity. Fireplace, TV / VCR, fully equipped kitchen, tables, chairs, bathrooms, loft area, and phone. See floor plan on page 2.
Mead Hall Capacity: Fee: Available:	30 day; 20 overnight \$24/day; \$36/overnight September – May	Heated lodge with electricity. Fireplace, TV / VCR, fully equipped kitchen, tables, chairs, bathrooms, and phone. See floor plan on page 3.
Cabin Units (2) Capacity: Fee: Available:	32 or 36 \$18/day; \$30/overnight Year round	Mandan has five cabins and Shoshone has three heated cabins. All cabins include electricity, access to water and bathroom, mattresses, fire circle, rake, bucket, picnic table.
Minataree Capacity: Fee: Available:	12 \$18/day; \$30/overnight May - October	Three platform tents in this unit. Access to water and bathrooms, fire circle, rake, bucket, and picnic table.
Red Arrow Capacity: Fee: Available:	30 Additional refundable deposit of \$100 September – May	A rustic, log-cabin style building that is used for programming only. There are nature program boxes available to use. This building is not heated. Access to water and bathrooms nearby. This facility is NOT available to non-member groups or organizations.
Tent Site Capacity: Fee: Available:	40 \$15/overnight May - October	Clearing near Baptiste Lodge that can fit 10 (four-person) tents. Access to water and bathrooms, fire circle, and picnic tables.

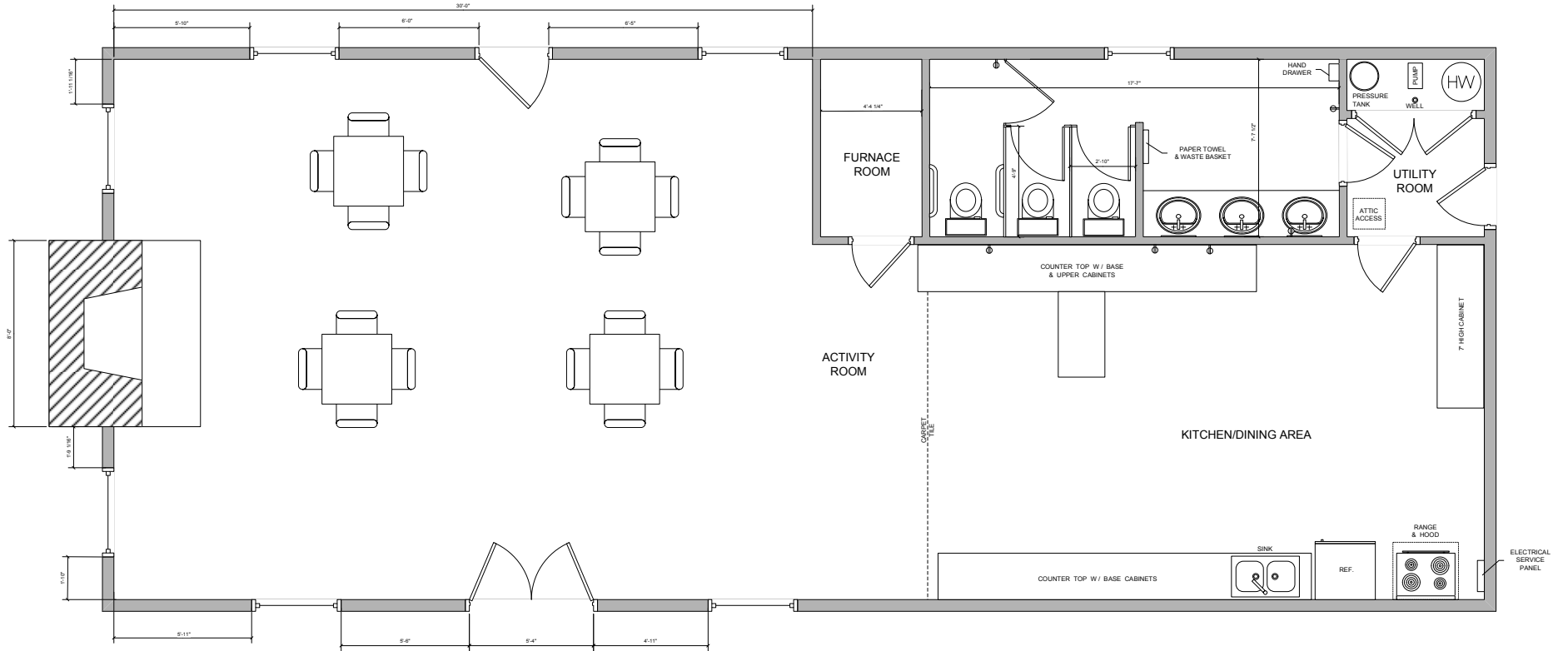


Charboneau
Floor Plan
 Scale 1/4" = 1FT.



Balcony Plan
 Scale 1/4" = 1FT.





Mead Hall Floor Plan

Scale 1/2" = 1FT.