

Property Information

All facilities have a \$50 refundable security deposit with the exception of the Nature Center at Camp Del O'Claire and Red Arrow Lodge at Camp Sacajawea (\$100).

- Day use is defined as up to eight (8) hours of use within one day.
- Overnights are from 3:30 p.m. on the first day to 2 p.m. the next day.
- Non-profit organizations/schools/government agencies are allowed to use our facilities. The security deposit and rental fee will be two times the amount listed.
- For profit organizations are also allowed to rent our facilities at four times the amount listed along with the \$100 security deposit
- All camps (except Camp Winnecomac) will be closed during the nine (9) day (15 day in Michigan) deer hunting season.

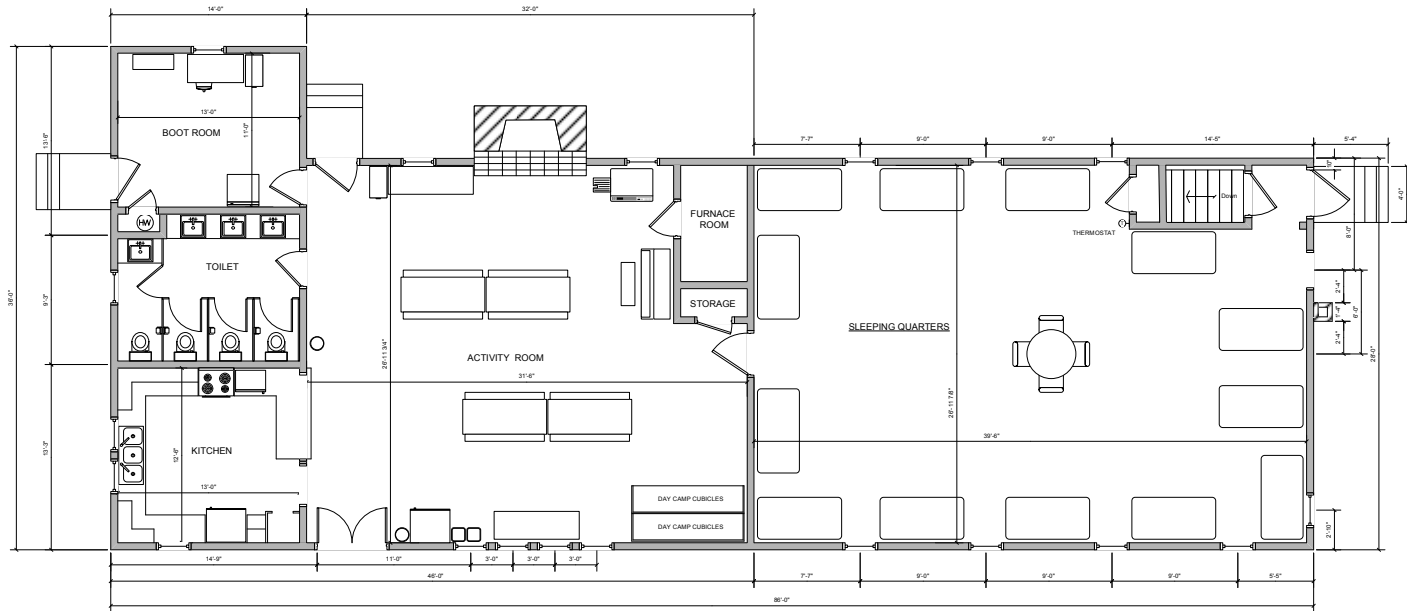
Camp Winnecomac

Kaukauna, WI

One of our most popular camps - book early with this one! The camp has two main lodges, tent cabins, yurts, and unit shelters. A large playfield and heated shower house can also be found at this property. Surrounded by miles of trails of the 1,000 Island Nature Preserve, there is plenty of hiking to do here! During the winter, some trails are also maintained for cross country skiing.

Eagle's Lodge Capacity: Fee: Available:	75/day; 26/overnight \$45/day; \$60/overnight September - May	Heated lodge with fully equipped kitchen, tables, and benches. Activity/dining room with fireplace. Separate sleeping room with 13 bunk beds. Use of Robin shelter is included with rental. See floor plan on page 2.
Hawk's Haven Capacity: Fee: Available:	40/day; 15/overnight \$18/day; \$30/overnight September - May	Heated lodge (wood stove) with fully-equipped kitchenette, outdoor cooking equipment, tables, benches, mattresses. Three tent cabins are also included with this rental. They have four cots in each and are available in the months of May, September, and the first part of October. See floor plan on page 3.
Yurt Unit Capacity: Fee: Available:	20 \$18/day; \$30/overnight September - May; call for summer availability	The two yurts in this unit both have heat and electricity, access to water, and access to the heated shower house. Use of Blue Jay shelter and outdoor cooking equipment is included with rental.
Unit Shelters (4) Capacity: Fee: Available:	16 \$15/day use only September - May	A unit shelter (Blue Jay, Cardinal, Gold Finch, Robin) with a poured concrete slab and constructed of wood and screens. The shelter has a fire circle with seating and four picnic tables, access to bathrooms and water.

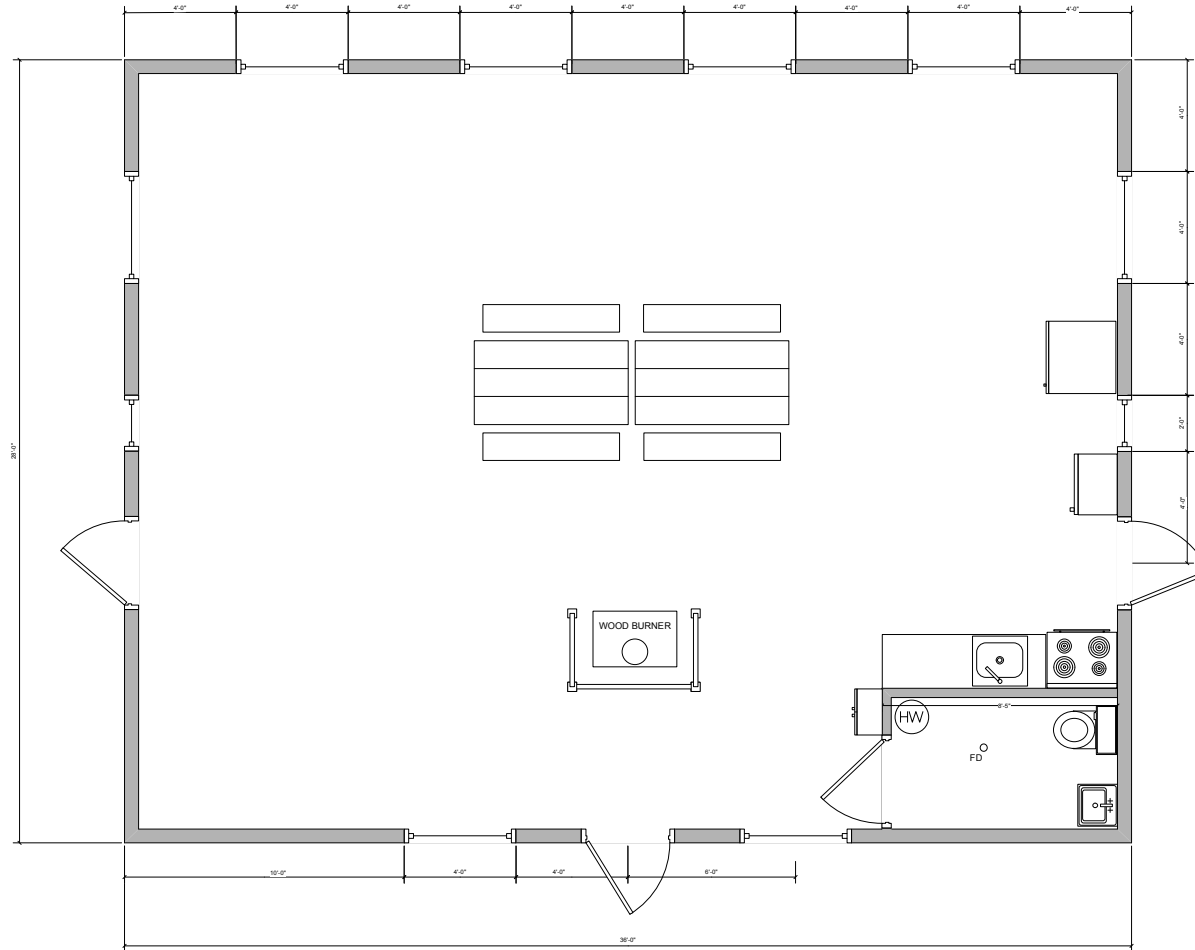
Eagles' Lodge



Floor Plan

Scale 1/4" = 1FT.

Hawks' Haven



Floor Plan

Scale 1/2" = 1 FT.